



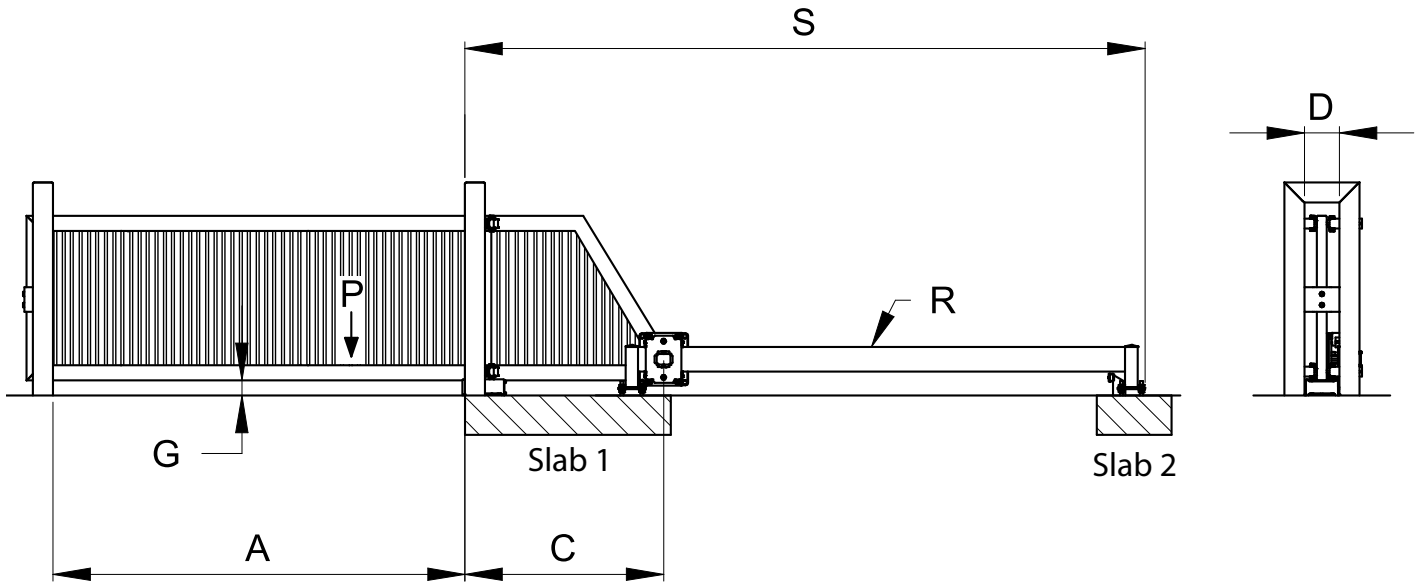
**GUARDIAN  
CANTILEVER  
SIMPLIFIED  
MANUFACTURE  
AND INSTALLATION  
INSTRUCTIONS**

# INDEX

# PAGE

DIMENSIONS . . . . . 3  
FOOTINGS . . . . . 4  
HARDWARE PARTS . . . . . 5  
INSTALLATION . . . . . 6  
GATE ADJUSTMENT . . . . . 12

# DIMENSIONS



## SPECS RELATING TO ALL GATES

Max. Gate Weight, kg	Slab 1	Slab 2	Slab Depth mm	Under Gate Clearance min (G) mm	Guide Post gap min (D), mm	End Rail Offset (N),mm
1500	1.5 m <sup>3</sup>	1.5m <sup>3</sup>	800 (500 min.)	90	200	0.065

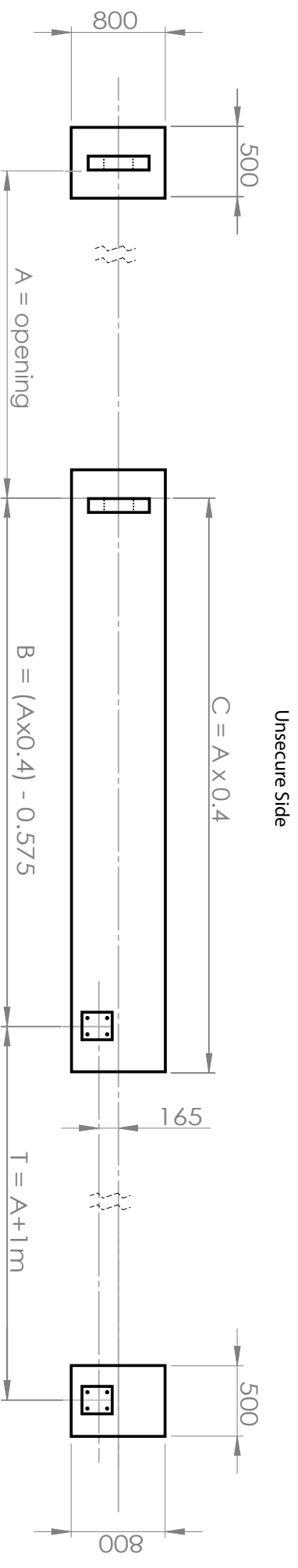
Slabs should be 25MPa concrete, 20mm aggregate with F72 mesh placed centrally top and bottom with 100mm clearance. Minimum slab depth.

## SPECS RELATING TO OPENING SIZE

Opening (A), mm	Gate Tail min (C), m	End Clearance minimum (S), m	End Rail Length (T), m	Gate Bottom Rail Material (O)	End Rail Material (R)
6	2.4	8.75	6.7	150x100x5.0 RHS	150x100x4.0 RHS
7	2.8	10.25	7.7	150x100x5.0 RHS	150x100x4.0 RHS
8	3.2	11.5	8.7	150x100x5.0 RHS	150x100x4.0 RHS
9	3.6	13.0	9.7	200x100x5.0 RHS	150x100x5.0 RHS
10	4	14.5	10.7	200x100x5.0 RHS	150x100x5.0 RHS
11	4.4	15.75	11.7	200x100x6.0 RHS	150x100x6.0 RHS
12	4.8	17.25	12.7	200x100x6.0 RHS	150x100x6.0 RHS

# FOOTINGS

Concrete foundations are the basis for a successful installation and gate's long-term performance. Excavating and pouring concrete footings expensive and a time consuming, get it wrong and you risk wasting days on site. This guide takes the guess work out of footings for any gate size.



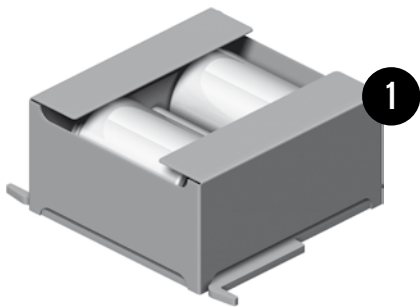
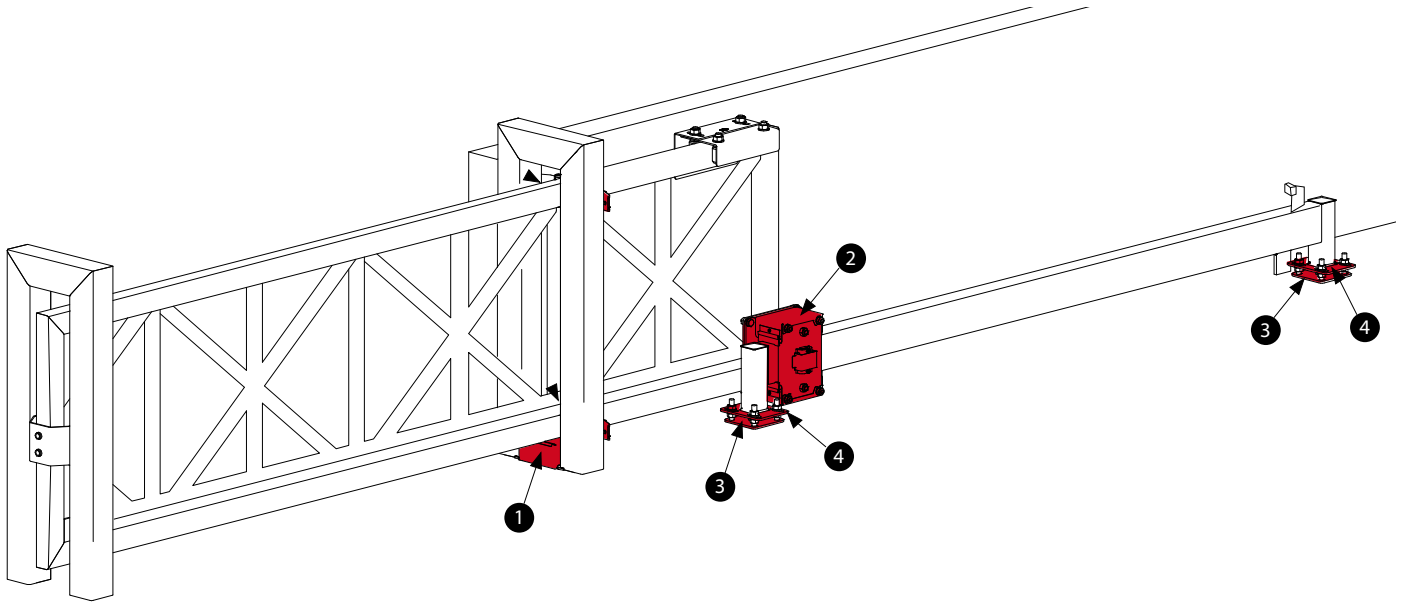
TYPICAL CONCRETE SLAB (Plan View)

## FOUNDATION

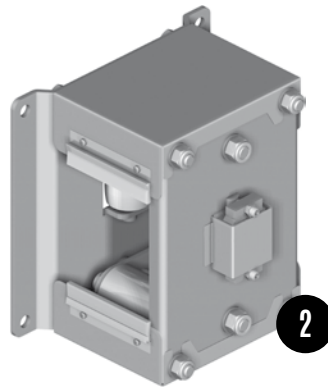
1. Concrete to be 25MPa/20mm aggregate
2. Top and Bottom F72 mesh to be placed centrally to concrete footings with minimum 100mm cover
3. 16mm all-thread, chemset 150mm above footings.

# HARDWARE PARTS

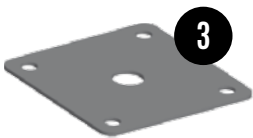
A Guardian Gate Pack includes these parts



**BASE ROLLER ASSEMBLY**



**TAIL ROLLER ASSEMBLY**

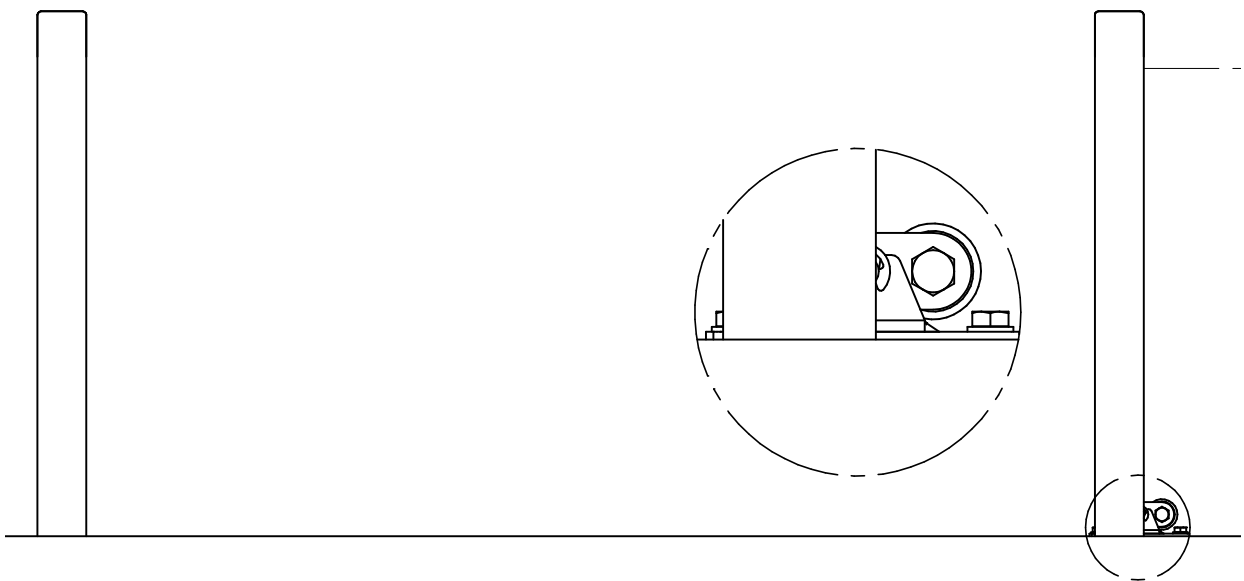
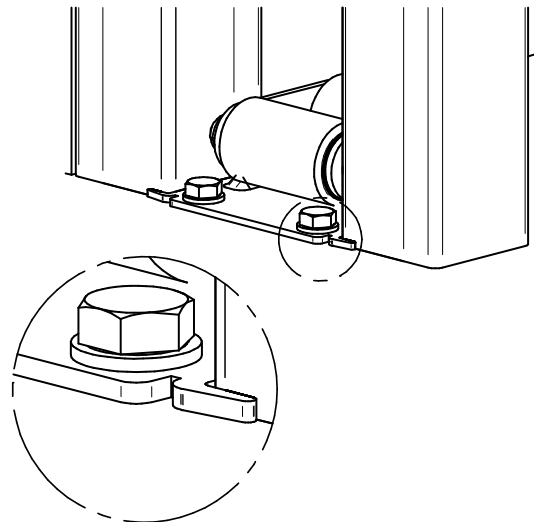
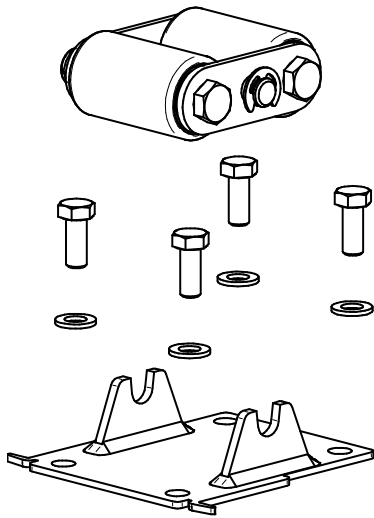


**TAIL MOUNT PLATE (x2)**

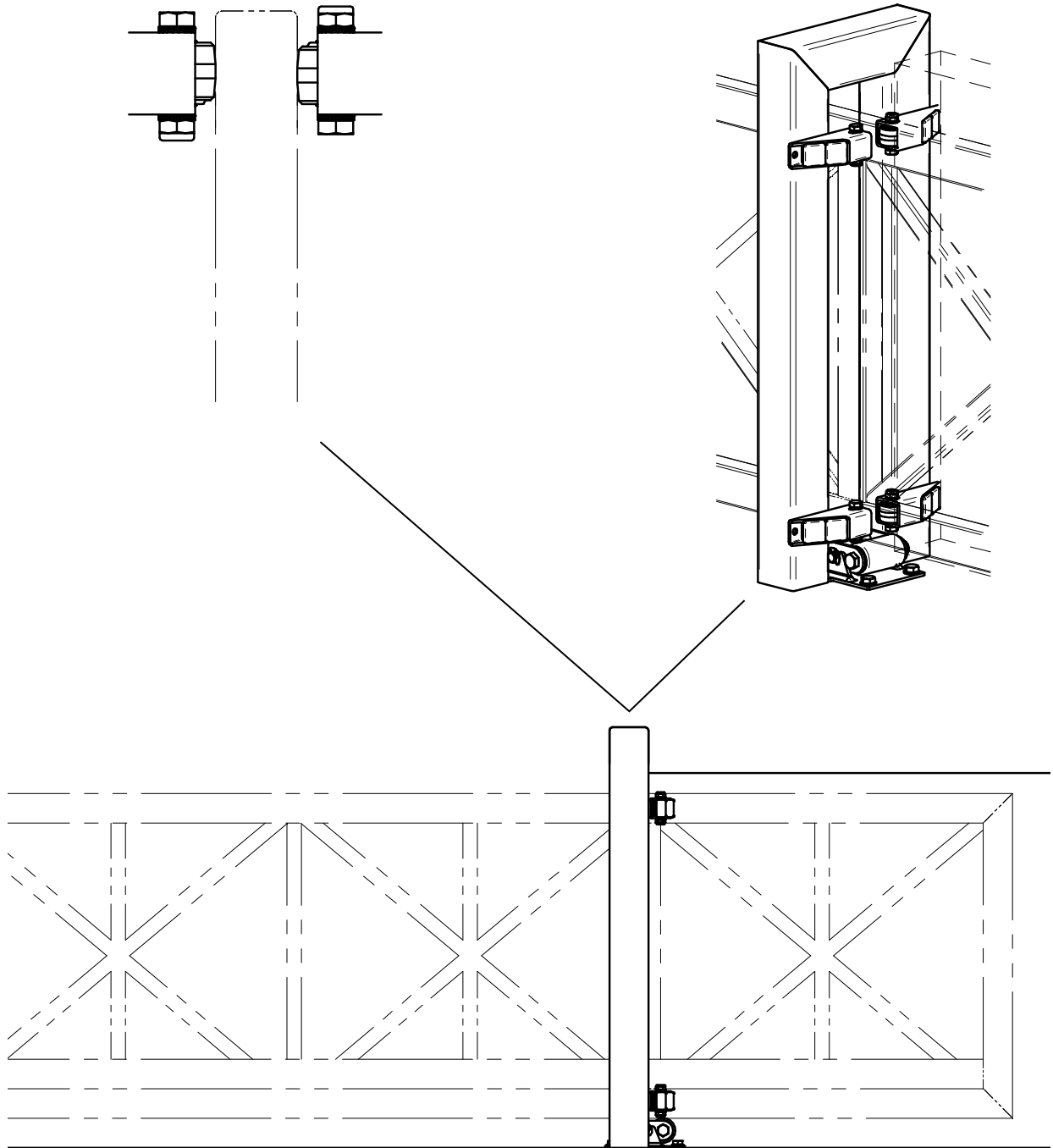


**TAIL ADJUSTER PLATE (x2)**

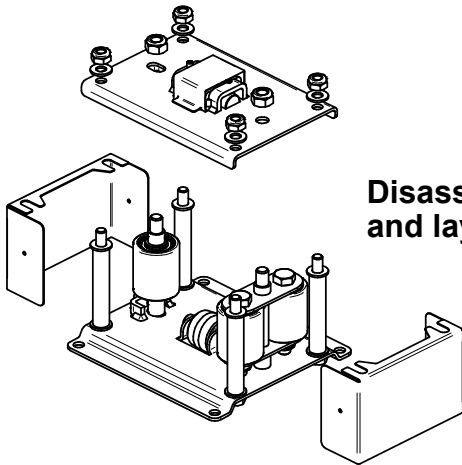
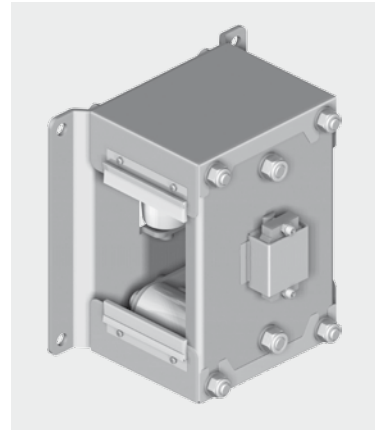
# BASE ROLLER ASSEMBLY



# ADJUSTABLE GUIDE ROLLER

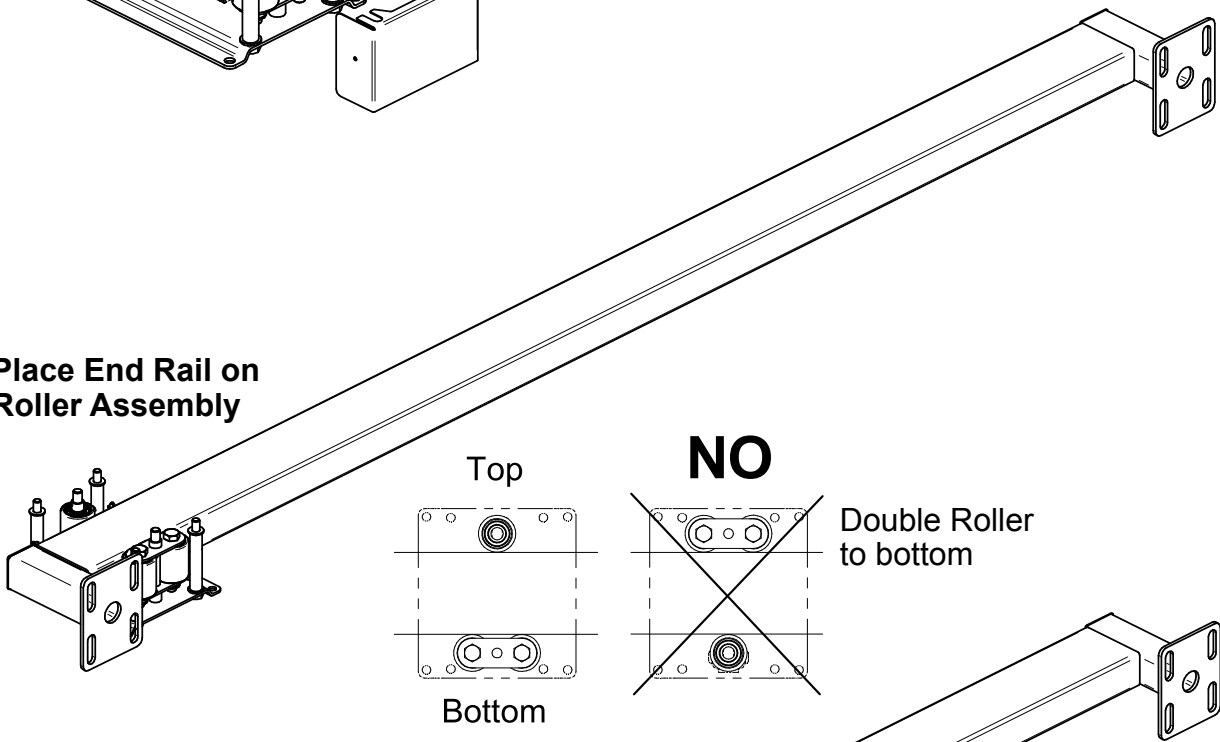


# TAIL ROLLER ASSEMBLY



**Disassemble Tail Roller and lay it on its side**

**Place End Rail on Roller Assembly**



Top

**NO**

Double Roller to bottom

Bottom

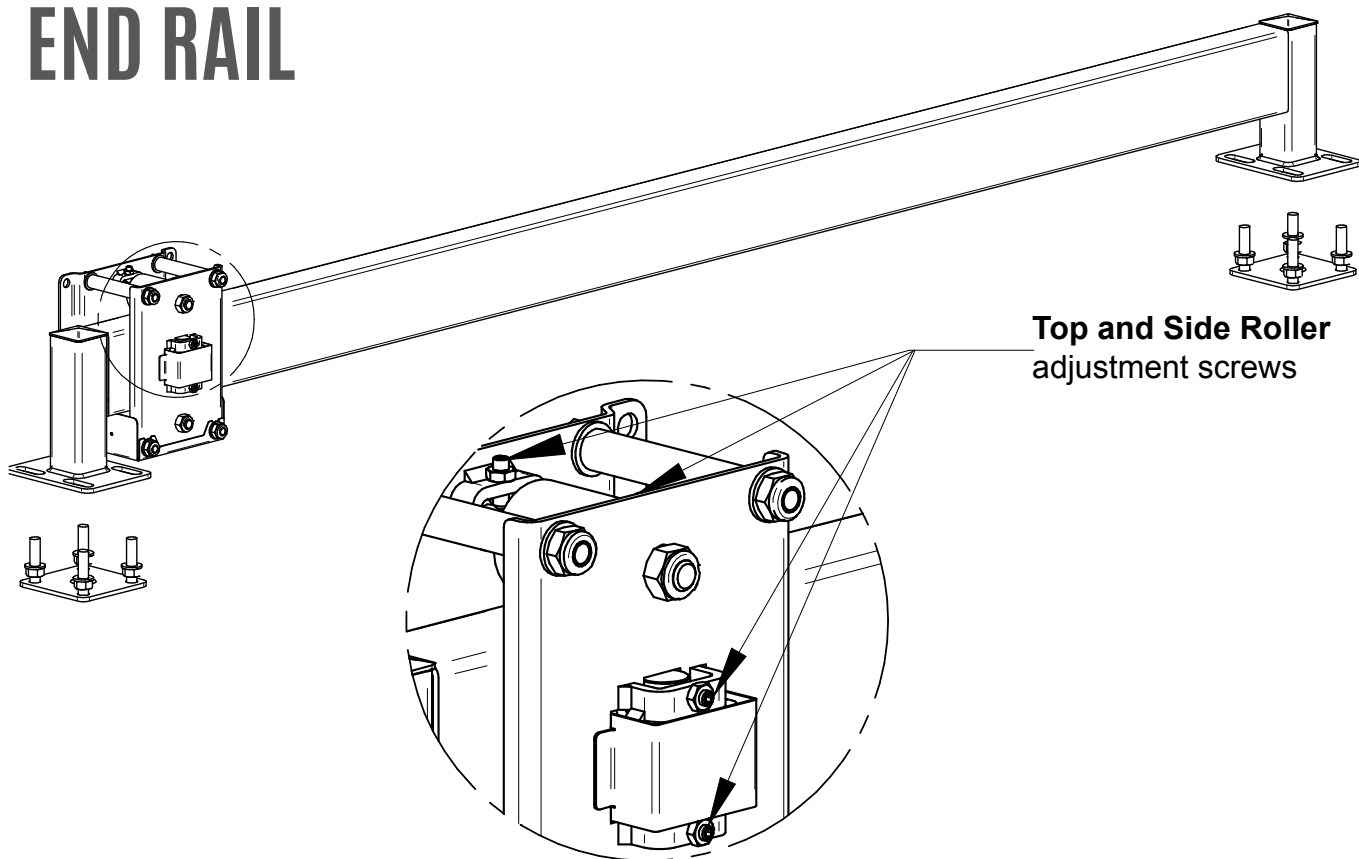
**Assemble Tail Roller**

Tighten after adjustment

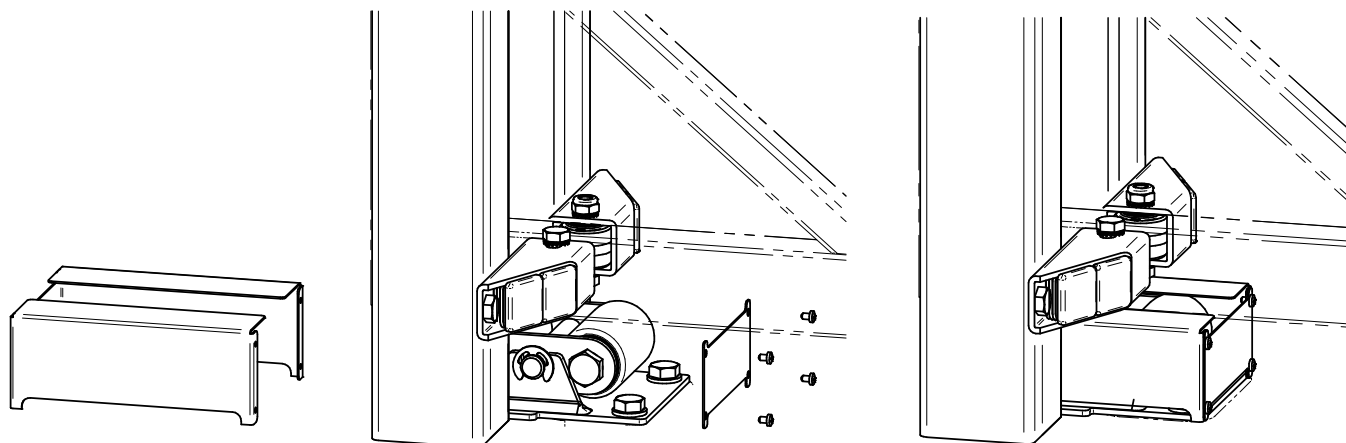
Tighten with care.  
Overtightening jams the roller rocker



# POSITION END RAIL

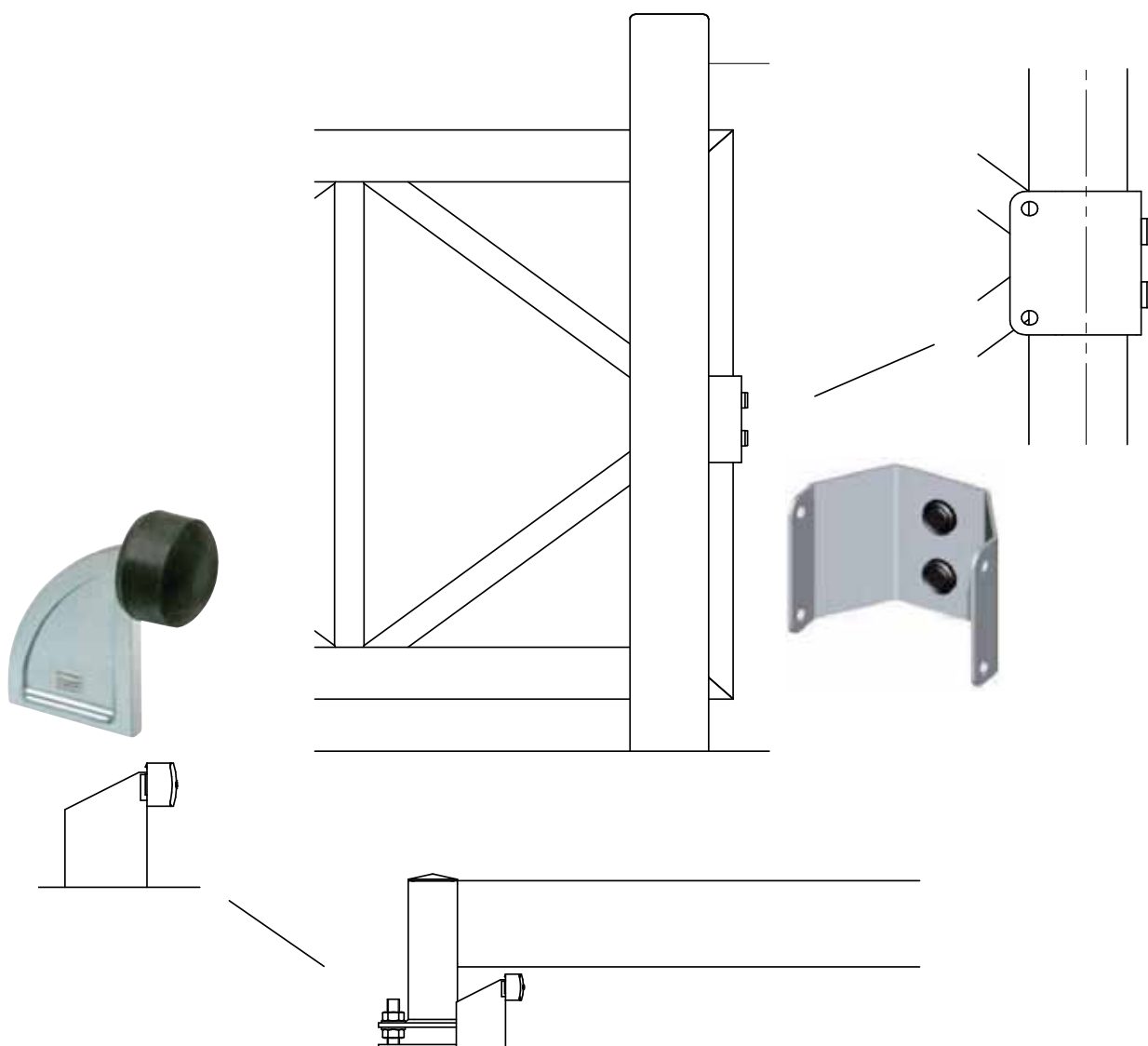


# BASE ROLLER COVER

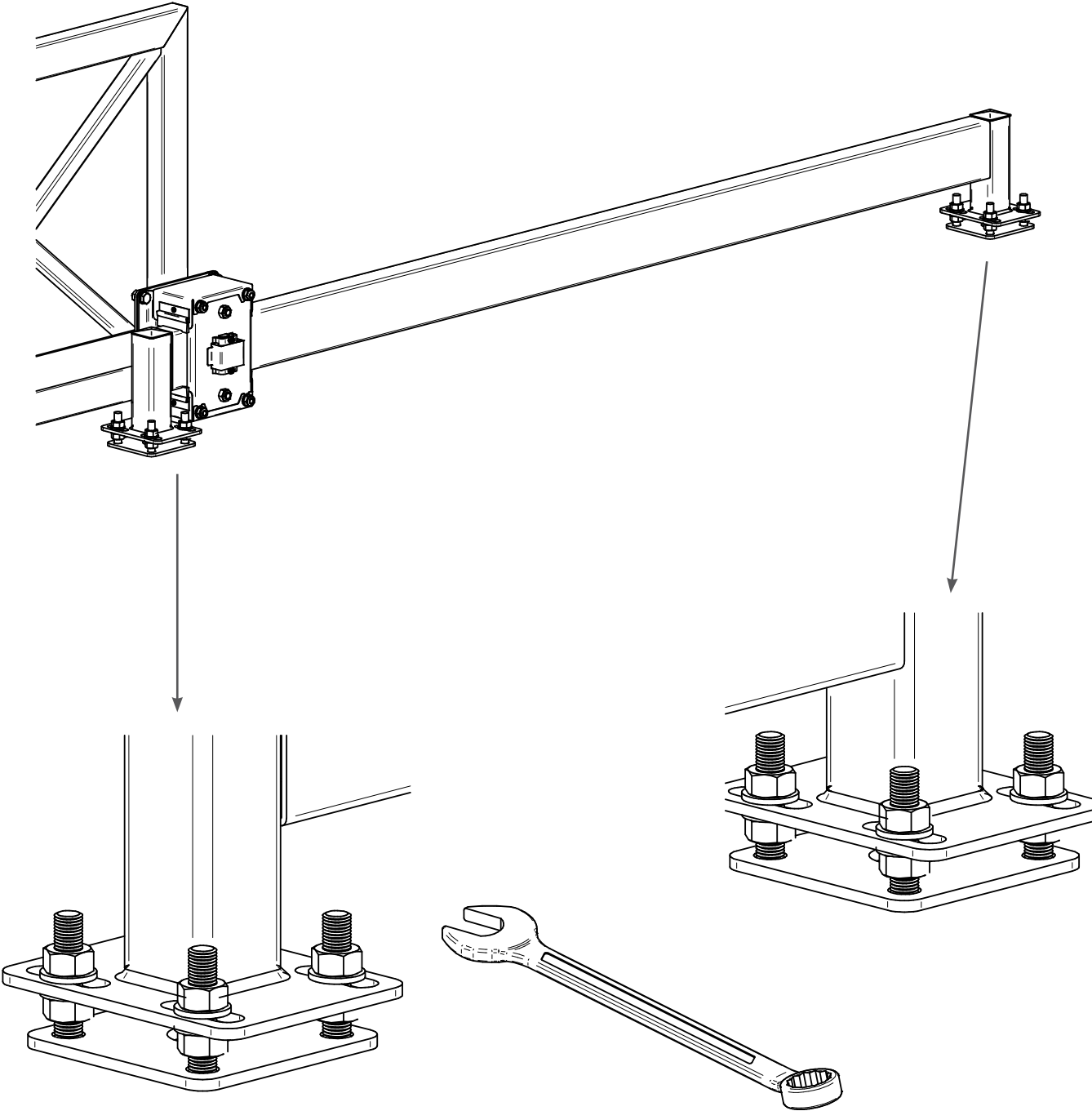
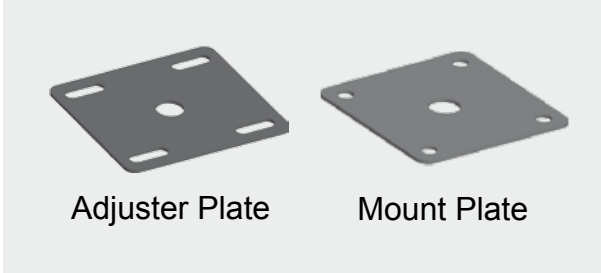


# END STOPS

Not supplied with  
Guardian Gate Packs



# TAIL PLATES



# TAIL ADJUSTMENT

